

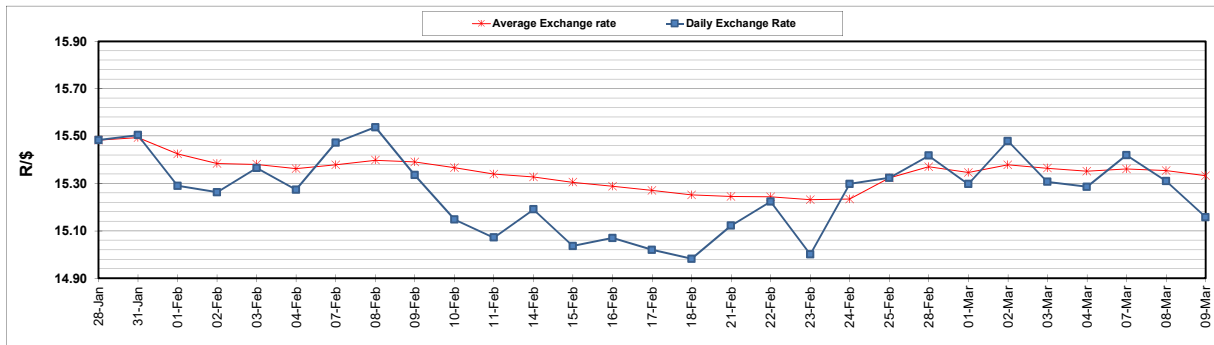
	PETROL 95 ULP	PETROL 93 ULP & LRP	DIESEL 0.05%	DIESEL 0.005%	ILL. PAR.
GAUTENG PUMP PRICE (SA c/l) AS FROM 02/03/2022	2,160.000	2,135.000	-	-	-
WHOLESALE PRICE (SA c/l) AS FROM 02/03/2022	-	-	1,948.880	1,955.280	1,318.688
SINGLE NATIONAL MAXIMUM RETAIL PRICE	-	-	-	-	1,690.000
BASIC FUEL PRICE - 09/03/2022 (SA c/l)	1,439.179	1,414.115	1,655.126	1,681.688	1,557.773
PRESS RELEASE CONTRIBUTION TO BFP 02/03/2022 - 09/03/2022 (SA c/l)	1,100.270	1,085.270	1,107.630	1,114.030	1,097.128
UNIT OVER/(UNDER) RECOVERY - 09/03/2022 (SA c/l)	(338.909)	(328.845)	(547.496)	(567.658)	(460.645)
AVERAGE BASIC FUEL PRICE 25/02/2022 - 09/03/2022	1,300.770	1,279.316	1,399.850	1,417.806	1,347.095
AVERAGE UNIT OVER/(UNDER) RECOVERY 25/02/2022 - 09/03/2022	(244.047)	(237.593)	(335.220)	(348.109)	(290.301)

### ANALYSIS MOVEMENT OF AVERAGE OVER/(UNDER) RECOVERY

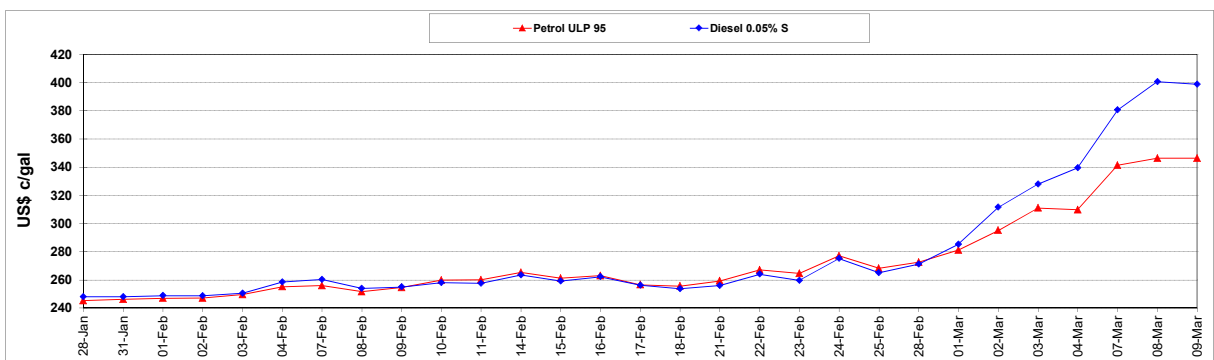
	PETROL 95	PETROL 93	DIESEL 0.05%	DIESEL 0.005%	ILL. PAR.
- MOVEMENT IN INTERNATIONAL PRODUCT PRICES	(235.670)	(229.354)	(326.205)	(338.978)	(281.625)
- MOVEMENT IN EXCHANGE RATE	(8.377)	(8.239)	(9.015)	(9.131)	(8.675)
AVERAGE UNIT OVER/(UNDER) RECOVERY 25/02/2022 - 09/03/2022	(244.047)	(237.593)	(335.220)	(348.109)	(290.301)

### R/\$ EXCHANGE RATE - (R/\$15.1580 - 09/03/2022)

#### EXCHANGE RATE USED IN BASIC FUEL PRICE



#### INTERNATIONAL PRODUCT PRICES OF BASKET USED IN BASIC FUEL PRICE



#### BASIC FUEL PRICE IN SA CENTS PER LITRE

